

VENDIM
Nr. 455, datë 19.6.2026

**PËR SHPALLJEN E DISA ZONAVE ME PËRPARËSI ZHVILLIMIN E
EKONOMISË MALORE NË BASHKINË PATOS**

Në mbështetje të nenit 100 të Kushtetutës dhe të pikës 1, të nenit 4, të ligjit nr. 20/2025, “Për paketën e maleve”, me propozimin e ministrit të Shtetit për Pushtetin Vendor, Këshilli i Ministrave

VENDOSI:

1. Shpalljen “Zonë me përparësi zhvillimin e ekonomisë malore” të disa zonave në territorin e Bashkisë Patos, si më poshtë vijon:

a) Zona nr. 1, fshati Kuqar, pjesë e Njesisë Administrative Patos, Bashkia Patos, qarku Fier, me sipërfaqe 413 (katërqind e trembëdhjetë) ha, sipas hartës në sistemin KRGJSH;

b) Zona nr. 2, fshati Drenie, pjesë e Njesisë Administrative Ruzhdie, Bashkia Patos, qarku Fier, me sipërfaqe 519 (pesëqind e nëntëmbëdhjetë) ha, sipas hartës në sistemin KRGJSH;

c) Zona nr. 3, fshati Gjynaqarë, pjesë e Njesisë Administrative Ruzhdie, Bashkia Patos, qarku Fier, me sipërfaqe 506 (pesëqind e gjashtë) ha, sipas hartës në sistemin KRGJSH;

ç) Zona nr. 4, fshati Ruzhdie, pjesë e Njesisë Administrative Ruzhdie, Bashkia Patos, qarku Fier, me sipërfaqe 619 (gjashtëqind e nëntëmbëdhjetë) ha, sipas hartës në sistemin KRGJSH;

d) Zona nr. 5, fshati Siqecë, pjesë e Njesisë Administrative Ruzhdie, Bashkia Patos, qarku Fier, me sipërfaqe 751 (shtatëqind e pesëdhjetë e një) ha, sipas hartës në sistemin KRGJSH.

2. Shtrirja, kufijtë dhe pikat e hyrjes e të daljes së këtyre zonave përcaktohen në hartën treguese, sipas sistemit KRGJSH, që i bashkëlidhet këtij vendimi.

3. Llojet e aktiviteteve, që do të zhvillohen në këtë zonë, janë:

a) të zhvillimit ekonomik;

b) të zhvillimit industrial;

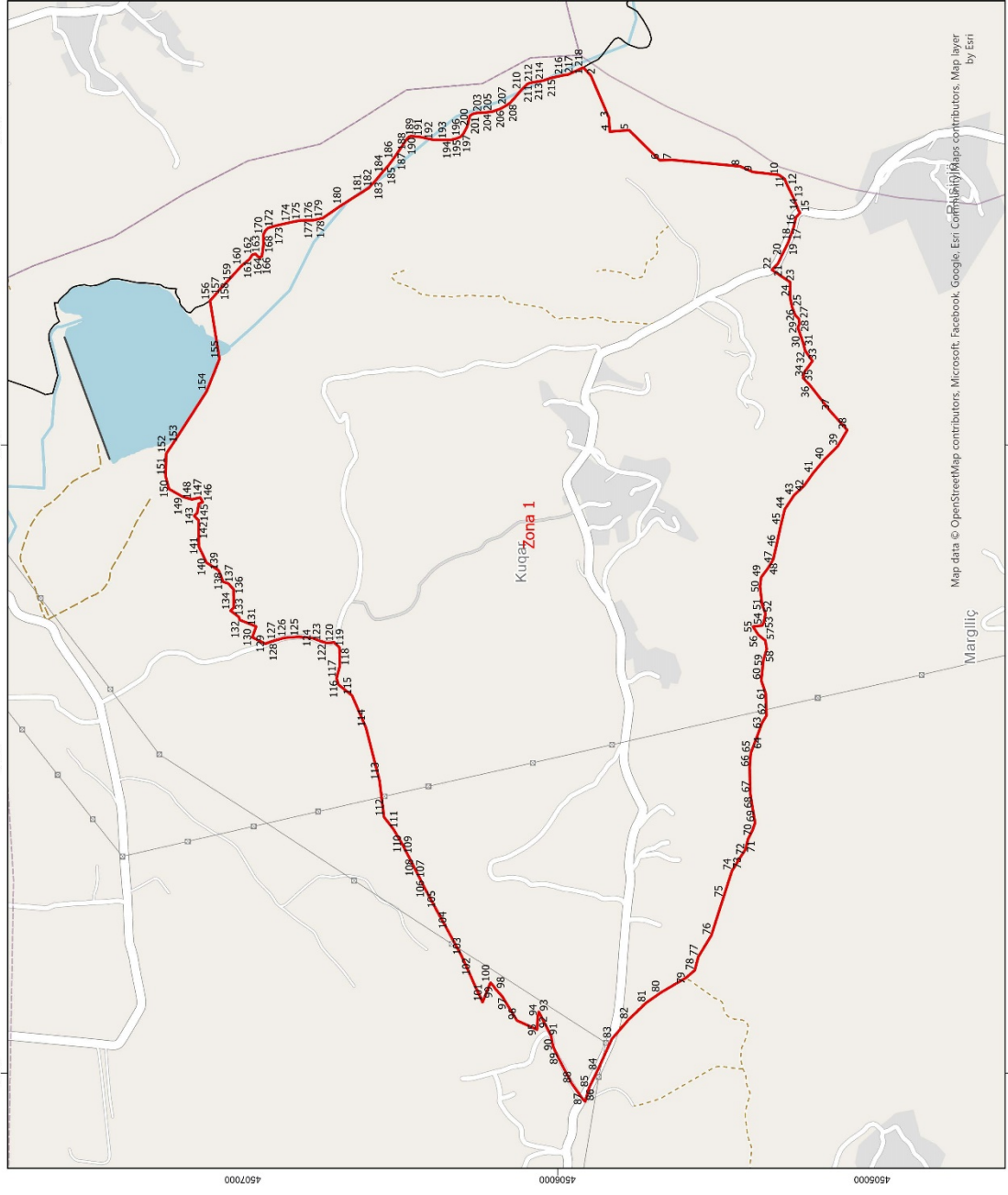
c) të zhvillimit turistik.

4. Ngarkohen Ministria e Ekonomisë dhe Inovacionit, Agjencia Shtetërore e Kadastrës dhe Bashkia Patos për zbatimin e këtij vendimi.

Ky vendim hyn në fuqi pas botimit në Fletoren Zyrtare.

KRYEMINISTËR
Edi Rama

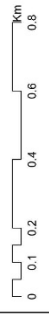
ZONA ME PËRPARËSI ZHVILLIMIN E EKONOMISË MALORE
ZONA 1, NJËSIA ADMINISTRATIVE PATOS, BASHKIA PATOS, QARKU FIER



Njësi Administrative	Zona	Sipërfaqe (Ha)
Patos	Zona 1	413
Ruzhdië	Zona 2	519
Ruzhdië	Zona 3	506
Ruzhdië	Zona 4	619
Ruzhdië	Zona 5	751



1:12,000



Legjendë

- Zona me përparësi zhvillimin e ekonomisë malore
- Ndërtësia
- Bashkia Patos
- Izolpse
- Kategoritë e Rrjetit Rrugor
- Kategoritë e Rrjetit Rrugor
- Kategoritë e Rrjetit Rrugor

*Zona 1 ndodhet në territorin e ekonomisë malore
 Patos me sipërfaqe prej 413 ha.

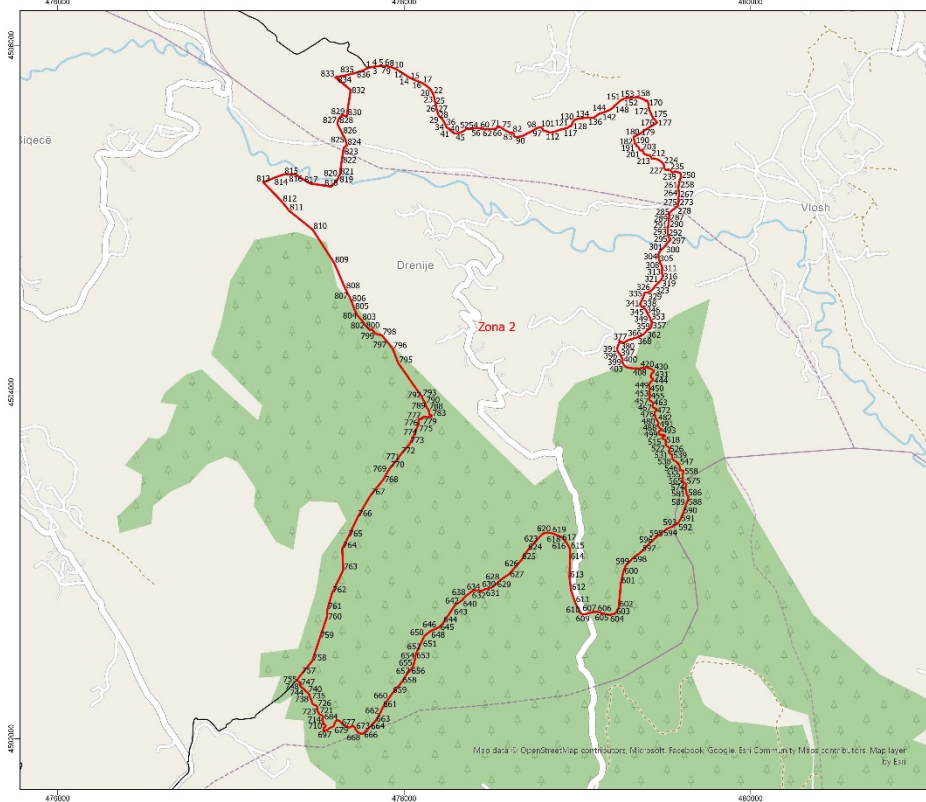
**Sistemi Koordinativ: KRGOUSH (Komiza Referuese Gjendëse dhe Shqiptare) / EPSG 6970

Map data © OpenStreetMap contributors, Microsoft, Facebook, Google, Esri Contributor, Map contributors, Map layer by Esri

Zona 1								
Njësia Administrative Patos								
Nr	Koordinata X	Koordinata Y	Nr	Koordinata X	Koordinata Y	Nr	Koordinata X	Koordinata Y
1	473200.81	4505918.58	74	470644.04	4505445.72	147	471832.41	4507135.67
2	473175.51	4505894.43	75	470558.31	4505473.23	148	471826.59	4507162.13
3	473041.23	4505836.88	76	470438.72	4505511.33	149	471834.52	4507190.71
4	472996.91	4505834.23	77	470370.99	4505552.61	150	471859.92	4507235.16
5	473001.54	4505772.72	78	470328.13	4505563.72	151	471901.2	4507245.74
6	472905.63	4505675.48	79	470304.31	4505591.77	152	471972.11	4507243.62
7	472906.95	4505637.12	80	470256.16	4505673.26	153	472004.39	4507221.93
8	472886.45	4505419.5	81	470224.41	4505718.24	154	472170.55	4507115.03
9	472868.59	4505379.81	82	470170.96	4505774.33	155	472273.2	4507074.29
10	472859.33	4505296.47	83	470109.49	4505827.47	156	472458.94	4507104.33
11	472846.41	4505278.13	84	470008.62	4505873.45	157	472474.99	4507089.69
12	472824.58	4505269	85	469954.38	4505899.9	158	472493.15	4507075.07
13	472785.29	4505249.56	86	469910.24	4505912.42	159	472518.31	4507051.01
14	472746.4	4505234.08	87	469918.51	4505920.35	160	472570.19	4507003.96
15	472738.86	4505228.92	88	469966.79	4505954.75	161	472590.58	4506979.31
16	472723.78	4505242.41	89	470047.49	4505996.75	162	472605.52	4506969.43
17	472692.82	4505249.16	90	470085.19	4506014.61	163	472607.75	4506959.39
18	472670.99	4505257.1	91	470118.27	4506020.57	164	472599.88	4506952.95
19	472643.61	4505267.02	92	470140.76	4506031.81	165	472596.26	4506945.5
20	472601.54	4505287.66	93	470195.66	4506059.59	166	472601.1	4506939.2
21	472577.33	4505299.17	94	470180.44	4506063.23	167	472610.64	4506937.72
22	472557.09	4505318.61	95	470139.1	4506065.21	168	472638.73	4506934.34
23	472518.2	4505261.04	96	470168.21	4506129.38	169	472658.85	4506934.57
24	472469.91	4505261.04	97	470244.61	4506176.01	170	472669.43	4506934.69
25	472438.82	4505254.43	98	470267.76	4506196.85	171	472682.75	4506927.43
26	472413.03	4505244.51	99	470279.33	4506205.11	172	472690.25	4506919.57
27	472400.46	4505232.68	100	470288.33	4506213.73	173	472697.41	4506895.31
28	472384.91	4505230.7	101	470226.31	4506238.71	174	472707.99	4506849.37
29	472374	4505235.99	102	470309.45	4506275.35	175	472714.18	4506816.63
30	472349.86	4505228.05	103	470374.43	4506304.77	176	472714.46	4506792.28
31	472324.39	4505219.12	104	470457.19	4506349.65	177	472714.63	4506776.93
32	472299.92	4505212.84	105	470523.23	4506386.05	178	472717.97	4506762.68
33	472266.84	4505189.69	106	470587.16	4506420.34	179	472721.33	4506746.31
34	472230.46	4505216.15	107	470619.12	4506436.43	180	472763.32	4506685.38
35	472213.26	4505219.79	108	470654.47	4506454.63	181	472803.75	4506621.26
36	472190.44	4505197.96	109	470696.17	4506475.8	182	472817.75	4506599.72
37	472107.1	4505132.8	110	470730.5	4506493.56	183	472840.76	4506578.28
38	472047.07	4505078.96	111	470776.64	4506520.86	184	472863.73	4506559.48
39	471996.2	4505109.03	112	470815.61	4506550.94	185	472888.33	4506537.53
40	471952.14	4505152.69	113	470932.03	4506565.49	186	472908.09	4506522.93
41	471909.68	4505188.01	114	471100.57	4506608.62	187	472933.7	4506505.23
42	471871.58	4505215	115	471202.43	4506652.74	188	472973.17	4506478.68
43	471839.03	4505248.74	116	471236.83	4506695.67	189	472980.66	4506471.35
44	471794.98	4505277.71	117	471256.94	4506702.02	190	472982.85	4506465.03
45	471744.49	4505290.1	118	471296.1	4506691.7	191	472979.5	4506434.29
46	471674.33	4505305.49	119	471355.36	4506692.76	192	472970.94	4506395.02
47	471635.83	4505314.22	120	471372.03	4506709.96	193	472970.75	4506365.9
48	471608.84	4505330.09	121	471370.18	4506721.33	194	472970.54	4506337.85
49	471578.68	4505352.72	122	471369.65	4506734.03	195	472974.97	4506320.43
50	471549.31	4505356.29	123	471374.41	4506750.44	196	472980.41	4506307.79
51	471492.56	4505349.94	124	471385.79	4506780.6	197	472990.57	4506298.37
52	471463.46	4505339.09	125	471389.23	4506821.35	198	473010.27	4506288.01
53	471434.35	4505344.38	126	471386.05	4506867.12	199	473023.56	4506283.4
54	471425.09	4505349.67	127	471378.12	4506895.17	200	473038.42	4506280.39
55	471421.78	4505378.78	128	471372.56	4506913.16	201	473047.44	4506277.85

56	471395.99	4505362.24	129	471367	4506928.5	202	473052.83	4506269.97
57	471377.47	4505339.75	130	471387.64	4506970.04	203	473056.7	4506255.19
58	471349.68	4505335.12	131	471422.04	4506957.61	204	473057.48	4506232.97
59	471315.29	4505345.7	132	471443.2	4507010	205	473060.41	4506208.12
60	471250.47	4505352.32	133	471452.47	4507012.64	206	473069.17	4506182.81
61	471208.79	4505338.43	134	471472.57	4507039.36	207	473080.52	4506162.3
62	471138.68	4505335.78	135	471481.57	4507029.05	208	473088.05	4506151.8
63	471116.19	4505349.67	136	471540.31	4507029.31	209	473102.5	4506138.2
64	471074.52	4505364.89	137	471558.83	4507046.24	210	473129.22	4506115.74
65	471018.84	4505385.9	138	471564.12	4507062.38	211	473149.57	4506094.8
66	470973.31	4505389.36	139	471600.37	4507076.93	212	473153.99	4506078.44
67	470891.29	4505387.38	140	471625.5	4507115.56	213	473156.31	4506061
68	470840.89	4505379.57	141	471676.57	4507139.91	214	473160.22	4506043.05
69	470797.5	4505372.16	142	471759.65	4507140.7	215	473167.89	4506019.84
70	470775.27	4505379.57	143	471773.93	4507154.46	216	473176.27	4505981.83
71	470744.58	4505394.92	144	471783.2	4507145.2	217	473178.56	4505966.5
72	470712.3	4505402.86	145	471813.36	4507139.91	218	473200.81	4505918.58
73	470692.72	4505415.56	146	471817.59	4507127.21			

ZONA ME PËRPARËSI ZHVILLIMIN E EKONOMISË MALORE
ZONA 2, NJËSIA ADMINISTRATIVE RUZHDIË, BASHKIA PATOS, QARKU FIER



Njësi Administrative	Zona	Sipërfaqe (Ha)
Patoš	Zona 1	413
Ruzhdië	Zona 2	519
Ruzhdië	Zona 3	506
Ruzhdië	Zona 4	619
Ruzhdië	Zona 5	751

1:17,000

Legjendë

- Zona me përparësi zhvillimin e ekonomisë malore
- Ndërtesa
- Bashkia Patoš
- Izoqpe

Kategorië e Rrjetit Rrugor
 Kategoria F. Rruge Lokale

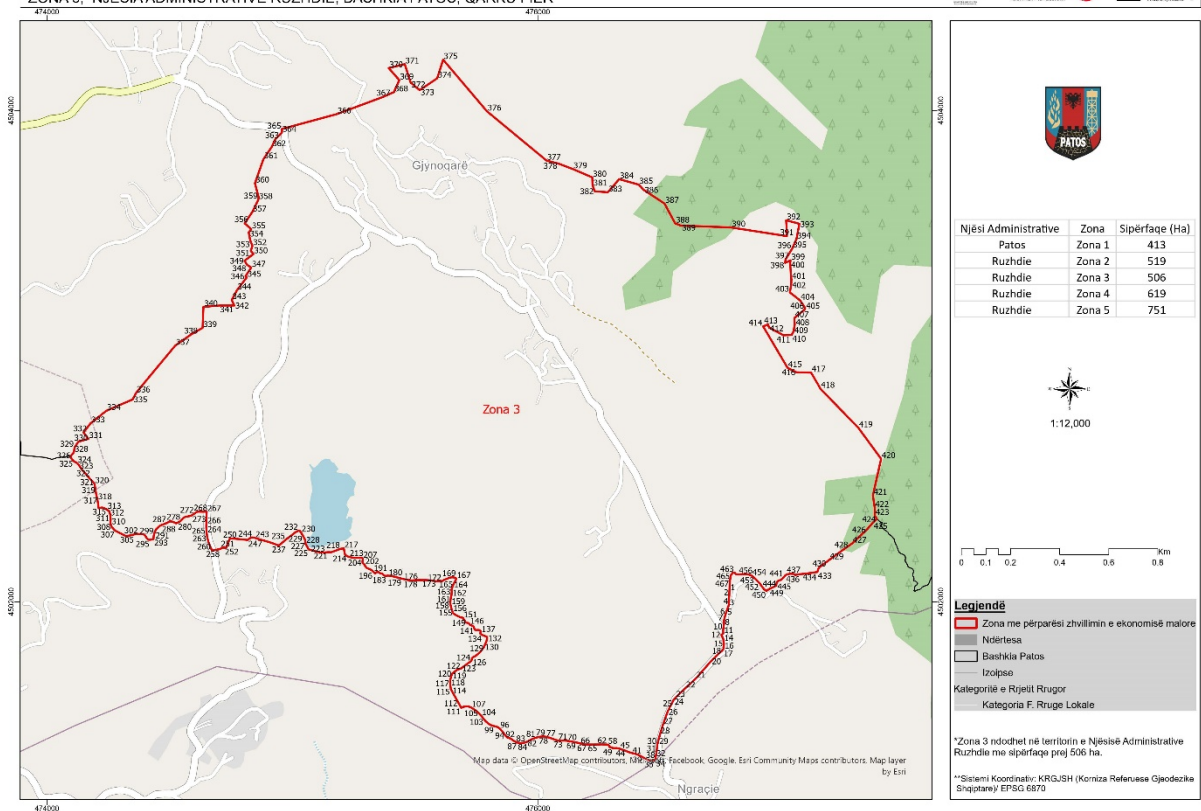
*Zona 2 ndodhet në territorin e Njësisë Administrative Ruzhdië me sipërfaqe prej 519 ha.
 **Sistemi Koordinativ: KRGSJH (Komiza Referuese Gjendëzile Shqiptare) EPSG 6870

Zona 2											
Njësia Administrative Ruzhdie											
Nr	Koordinata X	Koordinata Y	Nr	Koordinata X	Koordinata Y	Nr	Koordinata X	Koordinata Y	Nr	Koordinata X	Koordinata Y
1	477790.07	4505868.45	211	479418.72	4505365	421	479395.46	4504140.16	631	478468.44	4502863.93
2	477798.9	4505871.86	212	479424.09	4505358.18	422	479400.75	4504140.35	632	478447.56	4502852.77
3	477813.82	4505874.67	213	479425.46	4505353.43	423	479407.78	4504138.71	633	478434.96	4502852.63
4	477837.19	4505879.17	214	479426.56	4505350.26	424	479412.16	4504137.7	634	478420.08	4502855.54
5	477850.82	4505879.59	215	479428.71	4505347.64	425	479418.92	4504136.32	635	478408.58	4502857.09
6	477884.29	4505880.77	216	479432.95	4505347.16	426	479425.17	4504134.01	636	478399.3	4502855.5
7	477899.79	4505879.36	217	479440.09	4505347.24	427	479427.45	4504131.39	637	478385.96	4502846.39
8	477911.99	4505876.98	218	479446.98	4505346.53	428	479431.45	4504128.66	638	478358.46	4502825.63
9	477926.72	4505873.31	219	479456.28	4505343.46	429	479434.52	4504126.18	639	478347.65	4502815.98
10	477940.27	4505868.3	220	479466.65	4505339.34	430	479440.36	4504124.66	640	478336.62	4502801.01
11	477952.78	4505862.62	221	479475.44	4505334.41	431	479441.98	4504122.03	641	478319.39	4502788.49
12	477968.09	4505854.46	222	479479.44	4505331.28	432	479441.76	4504117.66	642	478296.31	4502774.22
13	477998.76	4505834.3	223	479489.31	4505324.77	433	479439.04	4504113.26	643	478281.98	4502753.33
14	478029.29	4505814.4	224	479497.09	4505315.33	434	479434.44	4504109.9	644	478223.58	4502666.96
15	478058.68	4505801.76	225	479499.29	4505308.48	435	479431.55	4504107.88	645	478203.94	4502645.45
16	478077.04	4505793.11	226	479499.6	4505304.25	436	479429.33	4504105.74	646	478189.67	4502638.63
17	478104.02	4505782.69	227	479499.65	4505300.01	437	479427.11	4504102.54	647	478175.47	4502631.46
18	478120.28	4505772.82	228	479499.98	4505293.93	438	479424.79	4504097.35	648	478153.44	4502622.53
19	478134.29	4505762.79	229	479501.89	4505288.92	439	479423.65	4504093.37	649	478137.33	4502610.58
20	478149.67	4505748.28	230	479505.39	4505284.2	440	479424.51	4504087.03	650	478117.09	4502592.99
21	478160.01	4505735.03	231	479509.93	4505280.81	441	479426.27	4504083.61	651	478105.57	4502571.01
22	478166.81	4505719.09	232	479515.49	4505280.61	442	479430.54	4504080.48	652	478076.59	4502550.34
23	478170.36	4505709.74	233	479518.91	4505282.5	443	479434.65	4504079.6	653	478065.42	4502481.76
24	478172.84	4505701.3	234	479525.52	4505282.57	444	479436.8	4504077.5	654	478062.33	4502457.92
25	478177.03	4505681.36	235	479532.16	4505280.53	445	479436.07	4504071.54	655	478051.86	4502417.75
26	478186.42	4505635.15	236	479537.22	4505277.68	446	479430.97	4504066.32	656	478036.41	4502397.12
27	478192.62	4505614.44	237	479540.71	4505273.22	447	479426.78	4504062.57	657	478012.09	4502368.28
28	478196.47	4505601.65	238	479543.94	4505269.29	448	479422.59	4504058.02	658	477996.78	4502327.38
29	478202.27	4505591.93	239	479548.2	4505266.95	449	479417.25	4504051.88	659	477931.51	4502261.77
30	478212.85	4505580.8	240	479550.85	4505266.72	450	479414.83	4504042.58	660	477908.08	4502228.45
31	478218.99	4505575.84	241	479556.64	4505269.17	451	479414.77	4504035.7	661	477853.32	4502178.5
32	478221.91	4505570.58	242	479561.11	4505271.6	452	479415.53	4504027.64	662	477858.65	4502142.18
33	478229.12	4505560.6	243	479565.08	4505272.17	453	479416.06	4504015.87	663	477834.4	4502102.57
34	478234	4505550.49	244	479568.01	4505270.35	454	479417.56	4503988.75	664	477803.14	4502069.46
35	478237.25	4505543.44	245	479574.91	4505268.84	455	479418.19	4503979.5	665	477775.99	4502042.83
36	478240.3	4505536.59	246	479580.74	4505267.59	456	479416.98	4503969.43	666	477763.27	4502028.12
37	478245.16	4505527.75	247	479587.92	4505265.02	457	479416.54	4503962.01	667	477757.83	4502027.28
38	478251.36	4505522.21	248	479594.31	4505261.65	458	479415.81	4503956.44	668	477751.38	4502029.41
39	478257.33	4505519.21	249	479595.94	4505258.23	459	479417.32	4503951.43	669	477743.9	4502031.86
40	478261.18	4505515.76	250	479597.04	4505254.54	460	479419.6	4503949.08	670	477733.17	4502037.33
41	478265.25	4505511.26	251	479597.38	4505247.79	461	479426.1	4503947.69	671	477729.57	4502041.18
42	478276.81	4505500.59	252	479597.48	4505239.06	462	479431.15	4503945.37	672	477725.61	4502046.55
43	478283.53	4505495.79	253	479596.72	4505235.61	463	479435.17	4503941.18	673	477720.46	4502052.59
44	478289.17	4505493.21	254	479594.38	4505232.67	464	479437.08	4503935.91	674	477717.86	4502058.66
45	478295.11	4505492.01	255	479592.03	4505229.21	465	479436.75	4503930.61	675	477713.37	4502066.4
46	478302.21	4505491.98	256	479590.49	4505225.22	466	479435.2	4503926.89	676	477708.91	4502071.26
47	478308.45	4505492.69	257	479590.27	4505221.51	467	479434.18	4503923.3	677	477699.07	4502073.01
48	478316.16	4505493.94	258	479590.05	4505217.54	468	479434.37	4503918.28	678	477691.16	4502068.68
49	478324.18	4505495.94	259	479588.79	4505211.96	469	479436.42	4503913.01	679	477682.91	4502064.36
50	478331.76	4505499.63	260	479587.54	4505205.33	470	479444.42	4503907.67	680	477670.48	4502070.82
51	478342.91	4505506	261	479585.78	4505197.37	471	479449.32	4503906.8	681	477653.3	4502077.9
52	478358.77	4505517.3	262	479584.29	4505188.89	472	479452.63	4503906.71	682	477639.94	4502090.62
53	478363.73	4505518.52	263	479583.56	4505183.06	473	479456.51	4503903.57	683	477630.18	4502100.16
54	478369.55	4505518.69	264	479582.64	4505170.61	474	479456.19	4503896.82	684	477620.3	4502105.64
55	478379.41	4505517.85	265	479584.6	4505161.63	475	479451.75	4503891.61	685	477612.66	4502107.24
56	478385.86	4505518.24	266	479586.04	4505151.06	476	479448.23	4503886.67	686	477605.6	4502102.93
57	478394.11	4505519.5	267	479587.21	4505141.28	477	479445.54	4503879.1	687	477602.29	4502096.63
58	478407	4505521.55	268	479587.81	4505134.67	478	479446.7	4503870.25	688	477597.99	4502087.26
59	478419.38	4505522.22	269	479585.76	4505129.09	479	479449.3	4503862.73	689	477593.72	4502076.04
60	478436.01	4505520.82	270	479583.42	4505125.89	480	479454.12	4503845.98	690	477591.73	4502072.29
61	478456.05	4505518.08	271	479582.95	4505120.59	481	479457.36	4503839.93	691	477588.21	4502068.87
62	478466.87	4505516.3	272	479584.38	4505110.55	482	479461.8	4503834.03	692	477579.1	4502065.88
63	478471.64	4505516.14	273	479584.98	4505104.46	483	479464.76	4503829.96	693	477571.68	4502063.09
64	478486.88	4505516.32	274	479585.07	4505096.53	484	479468.14	4503823.64	694	477566.8	4502060.33
65	478498.21	4505516.34	275	479581.83	4505089.5	485	479467.65	4503819.93	695	477562.12	4502055.05
66	478509.42	4505517.74	276	479578.4	4505082.42	486	479466.24	4503815.81	696	477555.74	4502050.04
67	478515.55	4505518.23	277	479581.67	4505074.84	487	479464.82	4503812.49	697	477544.43	4502047.54
68	478521.58	4505518.72	278	479574.44	4505068.24	488	479463.55	4503808.37	698	477541.23	4502045.98
69	478528.07	4505516.15	279	479566.72	4505062.92	489	479465.57	4503804.69	699	477536.52	4502043.05
70	478533.58	4505524.68	280	479561.99	4505059.21	490	479469.87	4503798.92	700	477532.82	4502046.31
71	478537.24	4505528.54	281	479556.64	4505055.34	491	479472.84	4503794.32	701	477535.51	4502052.15
72	478541.35	4505530.07	282	479548.92	4505050.01	492	479476.16	4503792.77	702	477536.09	4502058.21
73	478546.12	4505530.23	283	479544.36	4505046.15	493	479484.41	4503788.63	703	477536.54	4502062.93
74	478553.87	4505528.41	284	479540.59	4505042.61	494	479484.61	4503783.2	704	477539.58	4502066.07
75	478562.07	4505524.06	285	479537.13	4505039.08	495	479481.34	4503779.59	705	477543.99	4502069.29
76	478572.64	4505515.92	286	479533.21	4505034.58	496	479477.93	4503777.31	706	477547.12	4502073.56
77	478599.28	4505500.98	287	479532.16	4505029.81	497	479474.63	4503775.81	707	477546.43	4502078
78	478606.46	4505498.2	288	479529.79	4505014.54	498	479471.09	4503773.65	708	477543.65	4502080.3
79	478612.35	4505496.68	289	479526.83	4504981.47	499	479469.8	4503770.33	709	477539.16	4502084.48
80	478616.17	4505496.25	290	479527.24	4504973.54	500	479469.59	4503765.43	710	477532.2	4502084.82
81	478619.5	4505496.28	291	479524.43	4504954.92	501	479470.2				

84	478632.6	4505489.29	294	479521.74	4504912.49	504	479482.55	4503754.33	714	477527.47	4502107.63
85	478633.12	4505485.8	295	479526.43	4504896.45	505	479486.92	4503754.25	715	477527.18	4502114.61
86	478633.67	4505479.45	296	479528.35	4504889.86	506	479492.48	4503754.58	716	477530.3	4502119.3
87	478634.49	4505476.6	297	479538.46	4504880.6	507	479498.3	4503754.38	717	477531.9	4502121.15
88	478636.11	4505474.4	298	479527.02	4504867.14	508	479503.09	4503752.18	718	477526.32	4502134.28
89	478637.23	4505473.14	299	479515.9	4504853.51	509	479504.84	4503749.69	719	477519.93	4502137.6
90	478641.53	4505472.24	300	479507.91	4504843.57	510	479503.17	4503745.3	720	477512.71	4502140.05
91	478650.11	4505471.86	301	479497.72	4504832.02	511	479498.82	4503743.8	721	477508.99	4502143.09
92	478656.62	4505471.93	302	479482.15	4504818.98	512	479495.39	4503742.7	722	477505.18	4502152.66
93	478669.14	4505473.98	303	479475.75	4504809.38	513	479491.31	4503740.8	723	477497.61	4502165.07
94	478686.72	4505478.47	304	479467.17	4504795.31	514	479489.1	4503737.2	724	477497.06	4502171.69
95	478712.91	4505493.22	305	479468.61	4504779.44	515	479489.12	4503735.61	725	477498.52	4502177.99
96	478732.19	4505501.54	306	479470.69	4504770.86	516	479492.61	4503731.68	726	477497.17	4502185.17
97	478755.06	4505515.29	307	479473.14	4504759.64	517	479497.93	4503729.1	727	477495.65	4502188.12
98	478766.1	4505521.77	308	479478.95	4504742.84	518	479507.5	4503724.84	728	477492.66	4502190.83
99	478773.54	4505524.4	309	479483.7	4504732.64	519	479509.67	4503720.36	729	477496	4502194.1
100	478779.23	4505526.53	310	479488.44	4504723.43	520	479510.41	4503714.02	730	477481.17	4502195.99
101	478785.57	4505527.87	311	479490.19	4504714.51	521	479509.47	4503703.56	731	477475.85	4502198.9
102	478791.94	4505526.19	312	479487.68	4504702.91	522	479509.53	4503697.87	732	477471.14	4502203.29
103	478797.87	4505521.34	313	479487.78	4504694.3	523	479511.17	4503693.52	733	477468.52	4502210.03
104	478799.52	4505515.96	314	479487.86	4504687.03	524	479515.04	4503690.91	734	477465.68	4502218.25
105	478801.31	4505512.33	315	479489.93	4504679.44	525	479522.65	4503685.05	735	477462.18	4502227.95
106	478803.26	4505508.22	316	479492.61	4504676.49	526	479528.39	4503680.74	736	477457.86	4502236.15
107	478805.19	4505506.02	317	479494.99	4504671.23	527	479530.68	4503676.54	737	477454.59	4502244.37
108	478808.37	4505505.58	318	479492.1	4504663.25	528	479532.19	4503671.79	738	477452.61	4502250.91
109	478814.87	4505506.76	319	479484.65	4504649.27	529	479530.67	4503666.08	739	477451.28	4502257.4
110	478819.48	4505506.5	320	479478.13	4504640.6	530	479528.59	4503662.62	740	477444.77	4502264.06
111	478825.09	4505501.8	321	479470.96	4504631.58	531	479528.11	4503658.51	741	477438.72	4502270.27
112	478837.2	4505497.65	322	479459.8	4504623.19	532	479528.96	4503653.36	742	477430.96	4502274.58
113	478852.92	4505497.99	323	479447.73	4504608.82	533	479532.06	4503648.76	743	477427.43	4502281.82
114	478868.44	4505501.5	324	479442.51	4504602.15	534	479538.2	4503643.67	744	477421.04	4502288.36
115	478892.32	4505510.35	325	479432.38	4504590.78	535	479544.71	4503641.89	745	477412.97	4502293.21
116	478903.87	4505514.61	326	479424.52	4504583.75	536	479545.71	4503634.89	746	477407.84	4502297.6
117	478914.81	4505516	327	479419.93	4504579.72	537	479545.79	4503628.67	747	477401.62	4502305.15
118	478923.52	4505518.16	328	479413.02	4504576.67	538	479546.25	4503622.98	748	477398.4	4502308.71
119	478936.97	4505522.45	329	479405.45	4504573.27	539	479548.32	4503617.16	749	477397.08	4502313.77
120	478944.41	4505524.59	330	479396.86	4504572.51	540	479550.91	4503612.9	750	477398.76	4502314.85
121	478951.63	4505531.51	331	479389.9	4504573.43	541	479555.41	4503608.35	751	477402.1	4502316.95
122	478954.47	4505533.6	332	479385.37	4504564.77	542	479565.01	4503602.42	752	477404.18	4502323.32
123	478961.14	4505533.68	333	479383.45	4504558.47	543	479572.69	4503596.79	753	477398.22	4502324.01
124	478964.92	4505536.42	334	479382.18	4504554.48	544	479577.18	4503593.35	754	477391.4	4502328.74
125	478967.88	4505541.06	335	479380.26	4504548.5	545	479581.35	4503589.74	755	477386.48	4502333.55
126	478969.26	4505545.52	336	479378.01	4504542.85	546	479585.39	4503583.6	756	477381.44	4502338.36
127	478969.53	4505549.18	337	479375.41	4504538.19	547	479587.03	4503578.85	757	477406.57	4502373.24
128	478972.17	4505555.08	338	479373.83	4504532.22	548	479588.67	4503574.42	758	477468.88	4502441.86
129	478977.95	4505562.93	339	479371.9	4504526.9	549	479591.27	4503569.53	759	477511.98	4502577.63
130	478982.82	4505567.91	340	479368.35	4504519.59	550	479592.75	4503564.78	760	477555.63	4502707.41
131	478988.18	4505571.46	341	479364.12	4504512.59	551	479590.57	4503561.11	761	477556.43	4502744.32
132	478997.2	4505574.58	342	479362.53	4504507.61	552	479590.14	4503556.81	762	477583.81	4502839.97
133	479010.97	4505578.07	343	479362.92	4504502.32	553	479590.17	4503554.11	763	477648.5	4502974.11
134	479045.39	4505581.8	344	479370.64	4504492.81	554	479591.8	4503550.32	764	477642.55	4503095.95
135	479050.32	4505581.54	345	479386.63	4504483.07	555	479597.06	4503549.11	765	477676.68	4503163.03
136	479060.64	4505581.66	346	479394.02	4504472.9	556	479602.3	4503549.01	766	477732.24	4503280.5
137	479078.58	4505581.54	347	479399.07	4504465.68	557	479606.12	4503548.26	767	477805.48	4503403.71
138	479093.01	4505583.3	348	479405.19	4504450.86	558	479612.19	4503544.68	768	477881.61	4503498.1
139	479106.37	4505591.04	349	479410.57	4504442.98	559	479613.34	4503541.67	769	477902.78	4503538.05
140	479116.21	4505598.7	350	479415.31	4504433.77	560	479613.06	4503538.18	770	477918.66	4503562.65
141	479127.64	4505605.98	351	479419.36	4504426.87	561	479609.64	4503532.1	771	477955.57	4503606.31
142	479140.7	4505609.7	352	479421.75	4504419.95	562	479607.32	4503526.36	772	477980.57	4503641.76
143	479150.59	4505612.59	353	479423.81	4504413.69	563	479606.75	4503520.32	773	478032.96	4503702.09
144	479169.57	4505619.55	354	479424.73	4504407.96	564	479607.77	4503514.45	774	478055.45	4503748.92
145	479184.97	4505626.88	355	479429.76	4504407.62	565	479608.78	4503510.18	775	478082.3	4503814.58
146	479197.58	4505634.56	356	479429.06	4504399.54	566	479608.87	4503501.44	776	478083.46	4503845.48
147	479206.24	4505641.01	357	479427.99	4504389.47	567	479606.57	4503494.75	777	478100.08	4503845.9
148	479214.87	4505651.04	358	479427.04	4504379.66	568	479605.81	4503491.56	778	478104.21	4503848.13
149	479224.69	4505659.49	359	479425.26	4504373.29	569	479605.37	4503488.54	779	478105.69	4503855.01
150	479237.64	4505672.73	360	479420.95	4504367.95	570	479605.4	4503485.68	780	478112.67	4503857.76
151	479251.03	4505682.81	361	479411.37	4504361.49	571	479606.72	4503481.89	781	478125.37	4503858.6
152	479266.82	4505690.93	362	479399.3	4504352.22	572	479611.36	4503478.76	782	478140.4	4503856.06
153	479278.27	4505696.22	363	479392.78	4504343.67	573	479617.9	4503476.3	783	478158.29	4503859.77
154	479291.76	4505696.77	364	479388.07	4504338.59	574	479623.02	4503472.86	784	478158.5	4503866.12
155	479305.26	4505696.93	365	479383.09	4504334.43	575	479626.87	4503468.94	785	478147.28	4503870.99
156	479317.96	4505697.07	366	479376.13	4504329.59	576	479628.83	4503464.51	786	478143.79	4503879.66
157	479333.84	4505699.85	367	479361.8	4504321.35	577	479628.1	4503459.1	787	478143.79	4503884.22
158	479339.53	4505701.39	368	479345.2	4504314.68	578	479625.77	4503454	788	478141.46	4503898.19
159	479346.94	4505701.69	369	479334.66	4504310.72	579	479624.09	4503448.42	789	478128.66	4503912.47
160	479352.88	4505700.7	370	479328.31	4504310.12	580	479624.15	4503442.7	790	478123.26	4503935.12
161	479358.62	4505698.86	371	479325.4	4504309.96	581	479625.65	4503436.53	791	478114.47	4503949.09
162	479365.01	4505695.54	372	479321.99	4504307.54	582	479627.64	4503429.24	792	478104.31	4503965.39
163	479375.22	4505691.64	373	479316.33	4504304.96	583	479628.48	4503425.12	793	478103.57	4503977.88
164	479381.81	4505688.75	374	479310.92	4504303.84	584	479629.86	4503415.77	794	478099.23	4503977.98
165	479387.57	4505685.21	375	47930							

170	479407.2	4505672.1	380	479277.74	4504288.77	590	479608.62	4503297.24	800	477813.5	4504362.72
171	479410.74	4505659.22	381	479271.15	4504286.58	591	479594.28	4503264.87	801	477802.38	4504356.84
172	479412.21	4505640.82	382	479264.28	4504285.31	592	479579.82	4503242.99	802	477776.03	4504383.51
173	479415.99	4505625.4	383	479258.19	4504285.37	593	479553.4	4503226.59	803	477755.08	4504413.2
174	479428.15	4505598.65	384	479252.19	4504289.8	594	479517.85	4503212.18	804	477730.95	4504441.14
175	479435.74	4505583.07	385	479242.19	4504296.44	595	479454.69	4503163.14	805	477713.32	4504474.32
176	479449.04	4505568.19	386	479243.32	4504290.1	596	479414.5	4503126.27	806	477698.34	4504518.81
177	479460.51	4505553.52	387	479242.61	4504282.28	597	479370.2	4503080.26	807	477681.24	4504554.91
178	479403.71	4505520.32	388	479240.17	4504276.17	598	479316.07	4503037.63	808	477661.35	4504593.32
179	479362.24	4505490.07	389	479237.03	4504272.43	599	479280.07	4503001.5	809	477596.79	4504743.07
180	479338.02	4505478.55	390	479234.83	4504268.03	600	479266.42	4502969.84	810	477471.91	4504936.75
181	479324.07	4505471.9	391	479232.78	4504262.06	601	479250.49	4502933.33	811	477335.38	4505046.29
182	479325.45	4505466.89	392	479231.15	4504254.36	602	479238.73	4502917.35	812	477296.75	4505095.5
183	479326.04	4505461.34	393	479229.78	4504246.94	603	479219.52	4502922.82	813	477187.54	4505209.07
184	479326.08	4505458.43	394	479229.83	4504242.3	604	479185.3	4502914.73	814	477247.47	4505234.87
185	479326.91	4505455.26	395	479231.74	4504237.69	605	479143.88	4502924.06	815	477305.42	4505255.11
186	479327.99	4505452.63	396	479235.52	4504231.38	606	479112.97	4502932.81	816	477374.08	4505254.31
187	479330.47	4505444.72	397	479245.21	4504216.67	607	479089.17	4502931.84	817	477453.45	4505203.51
188	479330.51	4505440.75	398	479252.92	4504202.34	608	479061.96	4502923.13	818	477579.61	4505184.77
189	479330.88	4505436.25	399	479257.9	4504194.98	609	479031.22	4502917.18	819	477621.94	4505233.98
190	479332.73	4505432.04	400	479260.89	4504187.74	610	479018.53	4502924.74	820	477619.19	4505242.24
191	479334.61	4505429.68	401	479260.31	4504171.43	611	478987.75	4502928.91	821	477627.9	4505251.7
192	479337.79	4505429.18	402	479263.79	4504163.63	612	478963.82	4502855.76	822	477640.57	4505339.5
193	479339.92	4505427.88	403	479268.32	4504155.85	613	478954.6	4502927.78	823	477651.55	4505408.81
194	479341.55	4505424.46	404	479273.25	4504150.19	614	478956.9	4503033.54	824	477669.01	4505422.14
195	479341.85	4505421.29	405	479281.58	4504144.14	615	478957.6	4503095.17	825	477661.39	4505456.59
196	479343.48	4505417.6	406	479294.13	4504139.63	616	478935.42	4503136.23	826	477644.09	4505488.66
197	479350.67	4505413.45	407	479307.28	4504137.66	617	478907.08	4503165.32	827	477613.74	4505547.45
198	479353.61	4505410.84	408	479317.88	4504136.3	618	478879.65	4503176.21	828	477621.35	4505573.25
199	479355.79	4505405.83	409	479327.83	4504135.99	619	478852.22	4503186.4	829	477637.88	4505596.07
200	479357.96	4505400.83	410	479342.65	4504136.16	620	478826.27	4503190.31	830	477670.96	4505592.76
201	479362.27	4505394	411	479352.24	4504135.43	621	478806.02	4503185.88	831	477673.21	4505624.51
202	479365.98	4505393.77	412	479358.72	4504135.51	622	478786.59	4503170.25	832	477691.36	4505742.04
203	479370.74	4505394.62	413	479365.19	4504136.77	623	478752.43	4503132.43	833	477602.08	4505815.93
204	479375.79	4505392.83	414	479371.53	4504138.03	624	478712.6	4503087.48	834	477657.23	4505825.99
205	479379.83	4505386.52	415	479377.61	4504138.76	625	478677.52	4503032.46	835	477714.95	4505839.58
206	479380.42	4505381.23	416	479381.31	4504138.54	626	478639.49	4502989.32	836	477765.59	4505856.25
207	479383.12	4505375.97	417	479383.32	4504136.45	627	478606.39	4502950.37	837	477790.07	4505868.45
208	479390.6	4505370.5	418	479385.72	4504135.28	628	478553.57	4502914.76			
209	479402.81	4505367.46	419	479388.22	4504136.11	629	478531.68	4502894.06			
210	479412.61	4505366.78	420	479390.45	4504137.98	630	478502.81	4502871.04			

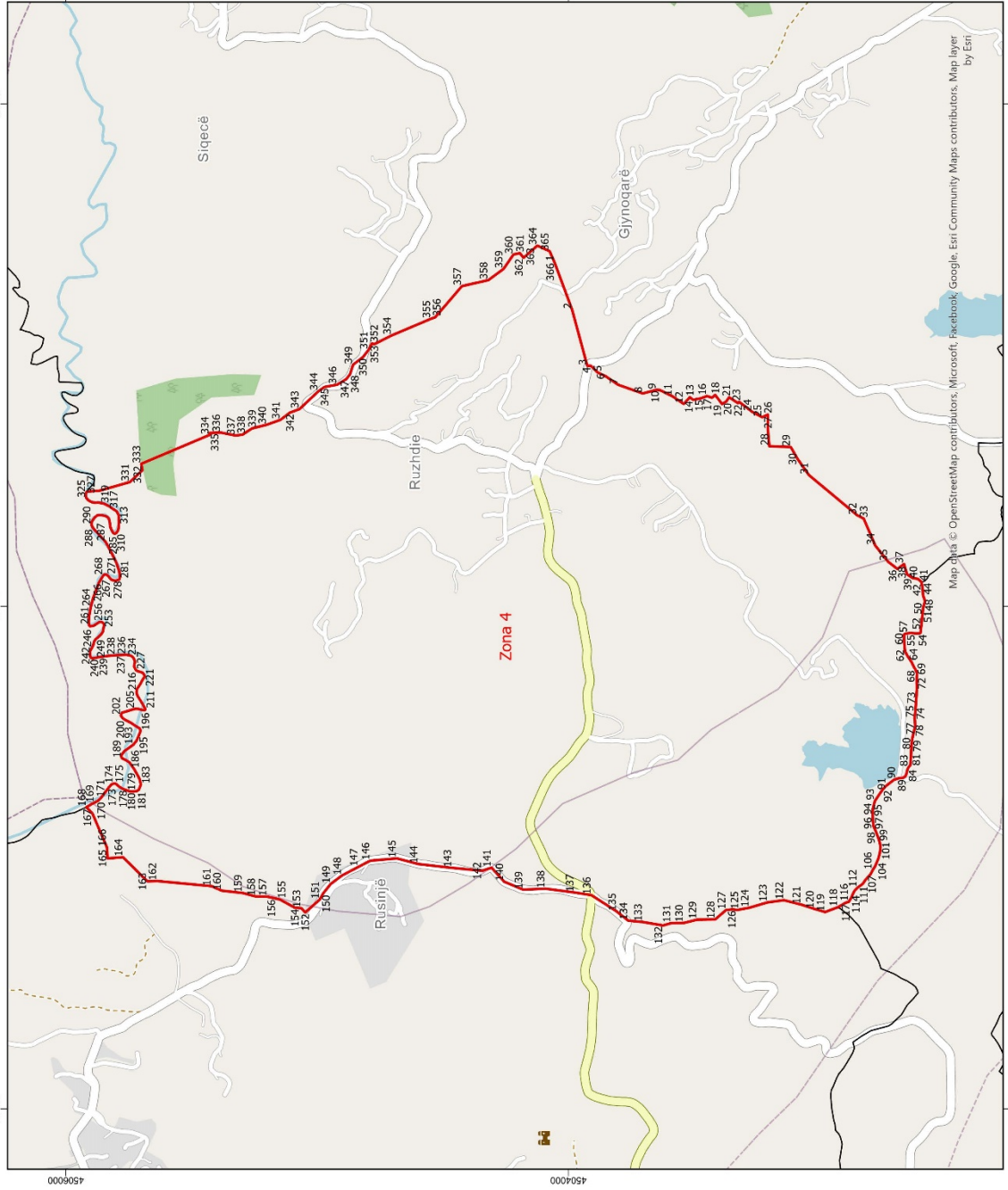
ZONA ME PËRPARËSI ZHVILLIMIN E EKONOMISË MALORE
ZONA 3, NJËSIA ADMINISTRATIVE RUZHDIË, BASHKIA PATOS, QARKU FIER



Zona 3											
Njësia Administrative Ruzhdie											
Nr	Koordinata X	Koordinata Y	Nr	Koordinata X	Koordinata Y	Nr	Koordinata X	Koordinata Y	Nr	Koordinata X	Koordinata Y
1	476781.43	4502059.72	118	475644.26	4501687.03	235	474972.99	4502253.48	352	474837	4503448.88
2	476779.72	4502023.72	119	475648.86	4501701.64	236	474948.03	4502231.77	353	474827.87	4503472.7
3	476777.63	4501998.04	120	475651.87	4501708.12	237	474944.54	4502230.33	354	474821.92	4503504.05
4	476778.94	4501988.73	121	475657.69	4501713.23	238	474939.49	4502231.25	355	474832.24	4503516.75
5	476768.19	4501959.41	122	475670.19	4501722.89	239	474921.63	4502237.91	356	474805.65	4503540.96
6	476763.86	4501946.05	123	475687.76	4501729.25	240	474906.02	4502243.19	357	474836.21	4503586.2
7	476758.24	4501923.02	124	475727.48	4501758.27	241	474882.42	4502250.07	358	474861.21	4503637
8	476759	4501917.99	125	475730.5	4501763.91	242	474864.58	4502254.91	359	474862.01	4503648.91
9	476759.06	4501912.53	126	475731.55	4501769.8	243	474847.14	4502260.87	360	474847.32	4503704.07
10	476755.16	4501885.73	127	475735.14	4501774.33	244	474837.6	4502262.44	361	474881.85	4503802.1
11	476755.25	4501870.03	128	475745.17	4501778.92	245	474832.98	4502262.25	362	474915.58	4503851.71
12	476748.38	4501866.61	129	475764.6	4501795.11	246	474828.94	4502260.38	363	474930.67	4503883.86
13	476750.69	4501860.34	130	475780.88	4501816.58	247	474817.69	4502251.99	364	474957.26	4503910.85
14	476756.3	4501847.24	131	475790.42	4501839.1	248	474805.07	4502253.39	365	474957.26	4503925.13
15	476758.32	4501830.86	132	475793.63	4501852.3	249	474768.06	4502257.03	366	475181.09	4503985.86
16	476757.82	4501812.93	133	475791.89	4501858.16	250	474745.22	4502257.89	367	475370.54	4504056.24
17	476755.65	4501807.02	134	475773.88	4501864.96	251	474729.78	4502220.09	368	475413.4	4504075.29
18	476750.95	4501801.23	135	475765.7	4501870.47	252	474722.63	4502220.43	369	475435.62	4504124.1
19	476734.31	4501786.62	136	475766.2	4501875.51	253	474718.01	4502220.38	370	475392.36	4504173.31
20	476705.64	4501758.42	137	475767.26	4501881.13	254	474713.95	4502220.33	371	475457.85	4504189.19
21	476643.71	4501687.68	138	475761.61	4501884.98	255	474711.58	4502219.47	372	475481.66	4504114.58
22	476601.44	4501648.42	139	475755.16	4501885.47	256	474708.39	4502216.91	373	475518.57	4504083.22
23	476560.84	4501609.87	140	475748.17	4501884.83	257	474702.95	4502214.47	374	475590.01	4504131.64
24	476552.98	4501599.83	141	475742.83	4501886.73	258	474684.92	4502211.46	375	475614.22	4504207.45
25	476537.63	4501570.11	142	475741.38	4501891.2	259	474671.93	4502208.65	376	475792.81	4503997.1
26	476528.59	4501552.08	143	475738.49	4501899.01	260	474671.19	4502211.72	377	476035.3	4503796.68
27	476509.73	4501499.07	144	475736.21	4501901.78	261	474668.89	4502216.88	378	476083.32	4503784.38
28	476497.84	4501460.42	145	475727.22	4501904.76	262	474658.82	4502240.99	379	476142.46	4503762.15
29	476490.31	4501433.03	146	475722.14	4501907.5	263	474653.13	4502261.09	380	476221.83	4503728.02
30	476486.98	4501418.14	147	475720.42	4501911.12	264	474649.89	4502286.83	381	476222.63	4503696.46
31	476483.41	4501387.43	148	475716.75	4501913.6	265	474648.99	4502304.6	382	476231.76	4503671.27
32	476480.4	4501368.63	149	475709.74	4501914.92	266	474649.38	4502332.33	383	476284.94	4503667.3
33	476480.63	4501360.51	150	475705.79	4501916.84	267	474650.94	4502367.22	384	476331.37	4503720.88
34	476478.49	4501357.62	151	475696.66	4501932.14	268	474634.98	4502367.04	385	476410.75	4503698.65
35	476472.92	4501354.89	152	475693.25	4501936.02	269	474619.29	4502367.42	386	476431.38	4503677.22
36	476462.85	4501354.22	153	475686.25	4501936.22	270	474613.27	4502367.22	387	476516.32	4503621.26
37	476450.08	4501356.03	154	475668.22	4501944.98	271	474608.8	4502365.76	388	476559.58	4503540.69
38	476438.83	4501360.53	155	475656.2	4501952.4	272	474600.89	4502359.65	389	476583.39	4503531.57
39	476427.83	4501366.98	156	475652.16	4501959.5	273	474589.77	4502352.38	390	476787.78	4503524.03
40	476414.87	4501373.84	157	475646.93	4501976.64	274	474580	4502349.19	391	477014.95	4503488.7
41	476404.45	4501378.9	158	475643.04	4501993.26	275	474563.93	4502346.35	392	477011.93	4503553.47
42	476394.05	4501381.86	159	475644.19	4502008.88	276	474557.66	4502343.2	393	477065.75	4503539.03
43	476376.5	4501386.01	160	475645.66	4502018.69	277	474551.15	4502336.68	394	477053.84	4503476.32
44	476359.34	4501392.67	161	475647.96	4502026.12	278	474546.59	4502331.73	395	477036.96	4503439.17
45	476334.17	4501401.49	162	475649.4	4502038.84	279	474540.2	4502327.03	396	477036.38	4503437.9
46	476328.1	4501403.19	163	475648.47	4502050.73	280	474531.16	4502321.61	397	477009.39	4503393.61
47	476321.08	4501404.4	164	475654.11	4502066.93	281	474526.69	4502320.44	398	477007.65	4503379.8
48	476310.16	4501404.22	165	475657.73	4502074.38	282	474521.78	4502320.94	399	477030.03	4503389.8
49	476304.33	4501404.88	166	475663.69	4502085.3	283	474517.97	4502323.98	400	477027.97	4503380.12
50	476301.12	4501406.19	167	475667.82	4502094.08	284	474511.64	4502326.57	401	477032.89	4503311.54
51	476297.51	4501408.05	168	475664.33	4502098.27	285	474504.48	4502327.61	402	477032.41	4503289.31
52	476295.54	4501408.81	169	475649.76	4502100.48	286	474500.14	4502327.84	403	477026.86	4503259.47
53	476291.96	4501408.6	170	475638.15	4502097.44	287	474488.17	4502321.26	404	477068.93	4503226.61
54	476290.86	4501412.06	171	475618.93	4502089.82	288	474465.58	4502312.46	405	477089.25	4503195.97
55	476290.18	4501414.08	172	475609.49	4502084.37	289	474457.93	4502308.31	406	477087.5	4503190.09
56	476289.03	4501415.98	173	475588.67	4502083.76	290	474445.18	4502296.26	407	477045.33	4503155.38
57	476287.38	4501416.93	174	475559.42	4502087.74	291	474439.69	4502286.26	408	477046.91	4503128.39
58	476285.24	4501417.97	175	475538.32	4502089.03	292	474434.85	4502268.41	409	477041.62	4503099.55
59	476283.44	4501418.56	176	475513.43	4502088.87	293	474434.01	4502256.5	410	477034.21	4503086.59
60	476280.19	4501418.64	177	475486.53	4502087.42	294	474428.43	4502254.2	411	477001.14	4503084.74
61	476272.78	4501418.82	178	475470.13	4502089.14	295	474418.79	4502252.69	412	476941.87	4503116.49
62	476261.99	4501419.54	179	475445.3	4502094.7	296	474414.02	4502253.19	413	476938.43	4503128.92
63	476235.1	4501419.09	180	475410.91	4502103.7	297	474407.95	4502257.33	414	476918.06	4503121.25
64	476213.4	4501418.99	181	475399.84	4502105.61	298	474399.83	4502269.7	415	477017.81	4502951.92

65	476201.77	4501419	182	475388.27	4502106.75	299	474397.12	4502273.59	416	477054.06	4502934.19
66	476193.65	4501419.32	183	475383.2	4502106.06	300	474390.09	4502275.89	417	477113.59	4502932.6
67	476182	4501421.01	184	475377.61	4502105.87	301	474383.5	4502277.21	418	477151.16	4502868.31
68	476160.51	4501426.51	185	475372.12	4502108.34	302	474373.43	4502275.98	419	477306.21	4502708.76
69	476138.76	4501430.88	186	475368.78	4502111.99	303	474364.59	4502277.14	420	477398.81	4502582.56
70	476118.84	4501434.02	187	475365.7	4502115.38	304	474349.5	4502273.11	421	477365.21	4502433.33
71	476108.88	4501435.02	188	475362.77	4502115.98	305	474335.14	4502269.99	422	477373.14	4502382
72	476093.62	4501434.71	189	475357.43	4502116.68	306	474322.26	4502267.72	423	477372.88	4502351.31
73	476082.41	4501435.42	190	475353.21	4502119.3	307	474277.56	4502290.07	424	477381.44	4502338.36
74	476075.53	4501436.75	191	475350.13	4502121.68	308	474263.2	4502305.36	425	477366.48	4502324.18
75	476065.13	4501440.41	192	475345.43	4502121.75	309	474258.14	4502322.45	426	477340.42	4502294.01
76	476047.69	4501446.65	193	475343.16	4502120.46	310	474259.68	4502336.22	427	477280.63	4502237.78
77	476033.22	4501450.41	194	475340.77	4502118.27	311	474257.42	4502356.29	428	477250.34	4502216.71
78	476026.21	4501451.45	195	475336.77	4502116.38	312	474254.45	4502367.7	429	477187.28	4502170.9
79	476020.18	4501451.66	196	475329.04	4502122.54	313	474244.84	4502375.63	430	477147.01	4502140.47
80	476007.59	4501450.4	197	475323.21	4502128.91	314	474231.21	4502382.6	431	477142.88	4502133.98
81	475992.79	4501447.01	198	475316.91	4502132.39	315	474224.42	4502384.08	432	477140.45	4502126.67
82	475977.03	4501441.23	199	475309.43	4502135.19	316	474210.05	4502382.64	433	477139.08	4502121.77
83	475952.67	4501428.35	200	475301.25	4502139.5	317	474208.39	4502398.5	434	477109.72	4502117.24
84	475941.07	4501425.69	201	475296.26	4502146.38	318	474205.88	4502414.13	435	477064.69	4502112.24
85	475929.88	4501424.45	202	475294.52	4502150.76	319	474200.04	4502440.76	436	477048.61	4502109.54
86	475924.41	4501425.5	203	475289.9	4502154.61	320	474193.81	4502480.77	437	477042.13	4502113.8
87	475916.55	4501426.96	204	475285.95	4502159.64	321	474172.11	4502504.75	438	477027.84	4502114.47
88	475906.98	4501431.19	205	475285.71	4502165.56	322	474140.89	4502540.81	439	477017.64	4502112.54
89	475899.37	4501435.44	206	475286.66	4502171.5	323	474128.92	4502558.88	440	477008.86	4502108.66
90	475892.59	4501440.69	207	475286.77	4502177.09	324	474121.98	4502565.66	441	477002.37	4502100.6
91	475889.06	4501443.31	208	475282.51	4502179.24	325	474109.86	4502572.53	442	476991.15	4502089.83
92	475884.7	4501444.66	209	475279.8	4502179.55	326	474099.95	4502582.63	443	476979.57	4502085.5
93	475876.12	4501447.5	210	475272.18	4502179.29	327	474096.85	4502594.11	444	476975.55	4502081.95
94	475867.34	4501456.09	211	475250.5	4502179.72	328	474109.37	4502609.04	445	476973.34	4502077.81
95	475856.53	4501471.09	212	475241.18	4502180.97	329	474112.81	4502629.94	446	476972.03	4502071.55
96	475844.33	4501484.39	213	475232.35	4502182.74	330	474127.63	4502652.17	447	476971.39	4502066.36
97	475836.01	4501489.9	214	475224.19	4502185.69	331	474168.64	4502664.07	448	476960.39	4502060.63
98	475830.77	4501491.97	215	475215.33	4502190.67	332	474148.8	4502690.27	449	476942.5	4502052.1
99	475823.19	4501493.57	216	475212.88	4502198.44	333	474177.64	4502727.31	450	476931.28	4502044.22
100	475809.14	4501497.89	217	475209.26	4502218.03	334	474241.93	4502778.38	451	476920.82	4502052.37
101	475800.4	4501502.83	218	475196.42	4502216.02	335	474349.35	4502824.68	452	476903.75	4502075.7
102	475789.09	4501512.22	219	475157.47	4502201.86	336	474362.58	4502850.34	453	476884.62	4502095.51
103	475781.72	4501519.98	220	475152.55	4502202.32	337	474522.68	4503042.88	454	476871.61	4502106.57
104	475769.77	4501535.81	221	475145.94	4502202.58	338	474586.57	4503087.73	455	476865.27	4502109.71
105	475759.57	4501546.06	222	475137.99	4502201.81	339	474634.2	4503115.11	456	476856.29	4502111.57
106	475744.86	4501559.06	223	475118.18	4502200.72	340	474637.37	4503200.44	457	476850.11	4502112.62
107	475728.54	4501569.76	224	475100.29	4502204.18	341	474702.86	4503206	458	476841.29	4502112.52
108	475715.6	4501574.37	225	475065.9	4502213.94	342	474763.18	4503206	459	476830.09	4502112.54
109	475708.45	4501574.57	226	475059.22	4502226.51	343	474752.86	4503228.62	460	476816.65	4502111.68
110	475696.16	4501572.19	227	475053.79	4502235.97	344	474774.3	4503268.7	461	476808.94	4502112.57
111	475687.66	4501568.45	228	475051.64	4502253.03	345	474813.98	4503320.69	462	476806.69	4502113.39
112	475677.36	4501587.52	229	475044.2	4502266.95	346	474808.82	4503325.46	463	476801.65	4502118.95
113	475663.49	4501612.29	230	475035.06	4502282.53	347	474832.24	4503360.38	464	476793.46	4502118.06
114	475648.74	4501638.62	231	475030.22	4502289.2	348	474814.38	4503372.68	465	476786.69	4502108.2
115	475645.88	4501643.63	232	475025.36	4502290.49	349	474805.25	4503388.56	466	476782.96	4502088.05
116	475643.15	4501661.8	233	475012.56	4502283.76	350	474841.37	4503415.94	467	476781.43	4502059.72
117	475642.41	4501677.76	234	474998.95	4502272.96	351	474830.26	4503428.64			

ZONA ME PËRPARËSI ZHVILLIMIN E EKONOMISË MALORE
ZONA 4, NJËSIA ADMINISTRATIVE RUZHDIË, BASHKIA PATOS, QARKU FIER



Njësi Administrative	Zona	Sipërfaqe (Ha)
Patos	Zona 1	413
Ruzhdie	Zona 2	519
Ruzhdie	Zona 3	506
Ruzhdie	Zona 4	619
Ruzhdie	Zona 5	751



1:15.000



Legjendë

- Zona me përparësi zhvillimin e ekonomisë malore
- Ndërrësia
- Bashkia Patos
- Izojpsë
- Kategoritë e Rrjetit Rrugor**
- Kategoria F. Rruge Lokale

*Zona 4 ndodhet në territorin e Njësisë Administrative Ruzhdie me sipërfaqe prej 619 ha.

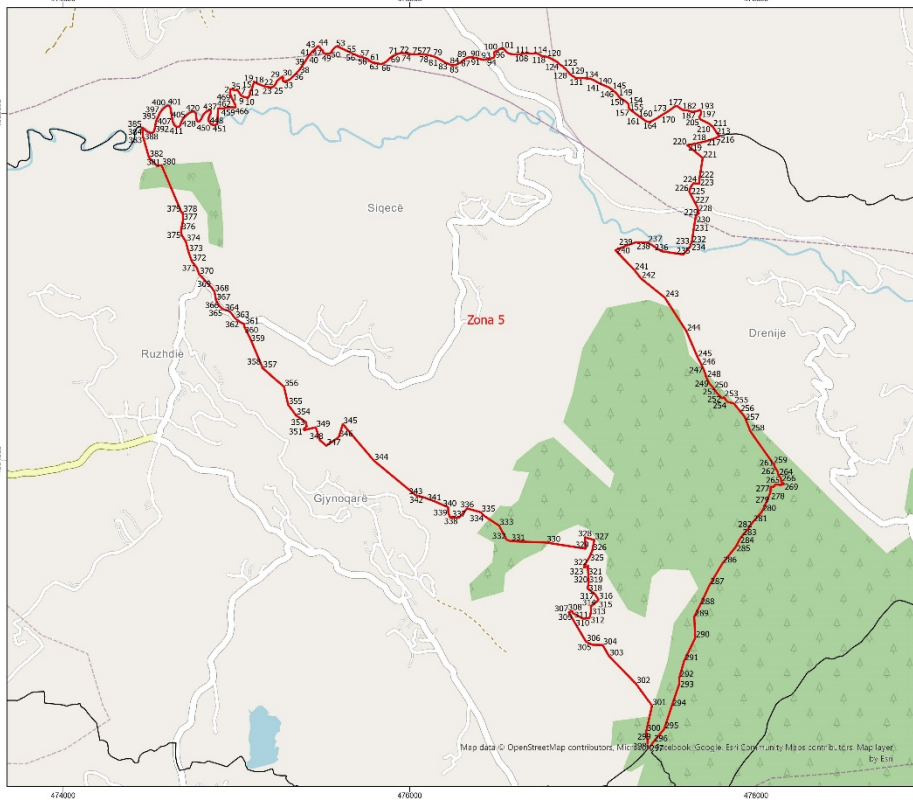
**Sistemi Koordinativ: KRQ-JSH (Korniza Referuese Gjeodezike Shqiptare) EPSG 6870

Zona 4								
Njësia Administrative Ruzhdie								
Nr	Koordinata X	Koordinata Y	Nr	Koordinata X	Koordinata Y	Nr	Koordinata X	Koordinata Y
1	475370.54	4504056.24	123	472821.94	4503207.2	245	473822.13	4505904.09
2	475181.09	4503985.86	124	472800.78	4503279.3	246	473835.34	4505896.2
3	474957.26	4503925.13	125	472791.52	4503328.24	247	473845.56	4505891.23
4	474957.26	4503910.85	126	472794.16	4503346.1	248	473860.43	4505887.38
5	474930.67	4503883.86	127	472791.52	4503372.56	249	473869.39	4505881.55
6	474915.58	4503851.71	128	472754.47	4503415.56	250	473877.55	4505871.27
7	474881.85	4503802.1	129	472753.15	4503487.66	251	473888.26	4505860.17
8	474847.32	4503704.07	130	472739.92	4503541.23	252	473898.93	4505852.88
9	474862.01	4503648.91	131	472739.26	4503590.84	253	473915.06	4505849.89
10	474861.21	4503637	132	472730	4503623.92	254	473929.27	4505847.93
11	474836.21	4503586.2	133	472743.89	4503704.62	255	473935.76	4505854.15
12	474805.65	4503540.96	134	472749.18	4503762.16	256	473938.03	4505859.89
13	474832.24	4503516.75	135	472785.56	4503807.8	257	473938.17	4505865.4
14	474821.92	4503504.05	136	472850.73	4503908.72	258	473930.4	4505878.44
15	474827.87	4503472.7	137	472861.31	4503976.19	259	473922.86	4505890.21
16	474837	4503448.88	138	472876.53	4504091.95	260	473920.58	4505904.16
17	474830.26	4503428.64	139	472872.56	4504180.58	261	473924.99	4505908.02
18	474841.37	4503415.94	140	472904.31	4504255.99	262	473938.1	4505909.23
19	474805.25	4503388.56	141	472959.87	4504306.26	263	473960.98	4505907.79
20	474814.38	4503372.68	142	472947.96	4504343.3	264	473998.54	4505900.81
21	474832.24	4503360.38	143	472959.21	4504462.37	265	474036.34	4505890.86
22	474808.82	4503325.46	144	472974.42	4504595.98	266	474094.19	4505868.65
23	474813.98	4503320.69	145	472996.91	4504682.63	267	474108.9	4505859.93
24	474774.3	4503268.7	146	472987.65	4504788.47	268	474122.33	4505851.82
25	474752.86	4503228.62	147	472963.18	4504835.43	269	474126.4	4505847.21
26	474763.18	4503206	148	472928.78	4504900.91	270	474127.29	4505843.41
27	474702.86	4503206	149	472895.05	4504945.89	271	474126.07	4505839.37
28	474637.37	4503200.44	150	472856.68	4504976.32	272	474123.58	4505834.69
29	474634.2	4503115.11	151	472832.87	4504989.55	273	474120.02	4505831.05
30	474586.57	4503087.73	152	472781.94	4505047.1	274	474117.09	4505828.26
31	474522.68	4503042.88	153	472799.14	4505062.97	275	474113.52	4505825.89
32	474362.58	4502850.34	154	472800.46	4505088.11	276	474109.32	4505822.24
33	474349.35	4502824.68	155	472832.87	4505146.98	277	474106.19	4505819.03
34	474241.93	4502778.38	156	472836.84	4505163.51	278	474104.13	4505813.29
35	474177.64	4502727.31	157	472844.78	4505198.57	279	474102.35	4505802.26
36	474148.8	4502690.27	158	472845.44	4505243.55	280	474105.24	4505790.86
37	474168.64	4502664.07	159	472859.33	4505296.47	281	474108.88	4505786.67
38	474127.63	4502652.17	160	472868.59	4505379.81	282	474122.24	4505785.13
39	474112.81	4502629.94	161	472886.45	4505419.5	283	474142.1	4505788.53
40	474109.37	4502609.04	162	472906.95	4505637.12	284	474171.85	4505798.39
41	474096.85	4502594.11	163	472905.63	4505675.48	285	474202.59	4505813.35
42	474092.09	4502594.05	164	473001.54	4505772.72	286	474240.27	4505832.84
43	474082.03	4502591.7	165	472996.91	4505834.23	287	474257.1	4505842.56
44	474074.21	4502590.21	166	473041.23	4505836.88	288	474310.54	4505891.23
45	474066.09	4502589.56	167	473175.51	4505894.43	289	474317.9	4505895.55
46	474050.98	4502588.82	168	473200.81	4505918.58	290	474325.49	4505898.18
47	474040.63	4502587.31	169	473215.38	4505893.87	291	474336.09	4505897.03
48	474031.71	4502583.56	170	473226.22	4505871.76	292	474346.53	4505891.01

49	474019.7	4502580.63	171	473236.92	4505861.3	293	474353.16	4505885.79
50	473992	4502588.31	172	473254.55	4505847.74	294	474362.51	4505875.36
51	473984.99	4502588.79	173	473279.64	4505828.97	295	474363.19	4505859.65
52	473931.16	4502594.2	174	473291.94	4505817.99	296	474361.4	4505850.1
53	473893.58	4502598.4	175	473295.77	4505806.92	297	474359.37	4505842.03
54	473892.55	4502602.17	176	473292.68	4505799.47	298	474356.89	4505836.71
55	473892.49	4502619.67	177	473281.7	4505787.17	299	474353.76	4505833.07
56	473894	4502635.37	178	473273.39	4505773.31	300	474349.35	4505829.63
57	473893.02	4502647.41	179	473263.14	4505744.08	301	474345.13	4505827.89
58	473890.07	4502660.26	180	473263.29	4505730.32	302	474339.86	4505826.35
59	473887.51	4502664.01	181	473265.03	4505717.64	303	474325.06	4505824.06
60	473882.61	4502663.95	182	473270.94	4505709.24	304	474316.6	4505823.76
61	473859.51	4502663.27	183	473291.15	4505701.53	305	474310.91	4505821.36
62	473830.96	4502661.13	184	473313.32	4505707.07	306	474303.96	4505818.11
63	473816.85	4502658.02	185	473328.05	4505714.65	307	474297.22	4505814.43
64	473797.65	4502647.16	186	473352.77	4505728.69	308	474291.33	4505810.98
65	473778.06	4502633.64	187	473379.03	4505746.99	309	474289.07	4505805.23
66	473772.48	4502631.33	188	473388.9	4505762.98	310	474291.24	4505800.18
67	473756.18	4502623.28	189	473396.15	4505777.36	311	474301.07	4505793.09
68	473748.57	4502618.16	190	473406.17	4505780.65	312	474311.47	4505790.24
69	473742.24	4502615.97	191	473424.86	4505766.04	313	474324.61	4505789.34
70	473735.41	4502612.19	192	473438.31	4505747.14	314	474334.56	4505789.24
71	473721.37	4502613.09	193	473449.61	4505731.38	315	474362.51	4505789.55
72	473666.35	4502613	194	473466.17	4505718.34	316	474378.09	4505797.57
73	473608.89	4502616.84	195	473484.69	4505710.43	317	474385.99	4505810.15
74	473573.41	4502619.61	196	473504.3	4505702.72	318	474398.49	4505827.86
75	473555.39	4502622.05	197	473513.53	4505705.47	319	474408.43	4505847.46
76	473544.04	4502620.33	198	473524.25	4505723.12	320	474413.45	4505871.44
77	473521.03	4502619.28	199	473536.62	4505741.13	321	474412.45	4505885.19
78	473505.63	4502623.87	200	473548.26	4505764.42	322	474415.07	4505896.87
79	473471.15	4502631.68	201	473555.76	4505774.43	323	474419.2	4505906.02
80	473428.25	4502635.42	202	473565.93	4505781.5	324	474424.2	4505912.85
81	473395.7	4502636.64	203	473576.57	4505776.98	325	474431.76	4505918.87
82	473368.16	4502638.71	204	473582.42	4505757.53	326	474442.52	4505922.16
83	473360.14	4502645.76	205	473589.62	4505734.79	327	474447.82	4505921.17
84	473353.22	4502649.38	206	473592.39	4505723.9	328	474456.12	4505917.45
85	473343.4	4502652.45	207	473592.19	4505712.98	329	474459.33	4505885.23
86	473333.06	4502654.44	208	473588.68	4505701.03	330	474459.99	4505867.37
87	473323.48	4502658.83	209	473586.99	4505690.53	331	474494.72	4505745.33
88	473318.11	4502666.44	210	473587.26	4505685.66	332	474541.69	4505695.39
89	473316.06	4502684.57	211	473591.3	4505683.59	333	474567.28	4505700.22
90	473310.13	4502703.55	212	473597.61	4505687.26	334	474682.3	4505428.09
91	473286.93	4502733.77	213	473614.87	4505696.78	335	474690.24	4505427.76
92	473271.52	4502748.83	214	473643.67	4505714.89	336	474691.56	4505382.45
93	473225.45	4502780.05	215	473654.43	4505718.4	337	474679.99	4505324.9
94	473194.24	4502787.95	216	473664.38	4505718.3	338	474683.29	4505297.12
95	473177.72	4502789.03	217	473672.73	4505716.2	339	474708.1	4505259.08
96	473149.16	4502788.07	218	473692.51	4505702.74	340	474722.98	4505199.88
97	473125.07	4502785.26	219	473702.51	4505697.98	341	474742.49	4505145.64
98	473105.48	4502776.78	220	473712.32	4505691.96	342	474770.94	4505108.27
99	473080.19	4502766.97	221	473717.45	4505688.2	343	474785.16	4505069.91

100	473059.31	4502760.38	222	473724.02	4505687.01	344	474856.93	4504993.84
101	473041.57	4502757.64	223	473729.5	4505689.4	345	474873.13	4504970.03
102	473019.32	4502759.93	224	473736.22	4505694.77	346	474882.39	4504919.75
103	472997.02	4502766.03	225	473739.68	4505706.24	347	474904.22	4504884.04
104	472981.72	4502772.2	226	473742.33	4505715.59	348	474923.4	4504868.82
105	472964.49	4502779.62	227	473746.71	4505721.57	349	474961.77	4504856.58
106	472949.78	4502788.98	228	473755.55	4505726.11	350	474991.86	4504817.23
107	472933.17	4502797.68	229	473761.24	4505728.51	351	475020.64	4504795.07
108	472920.34	4502809.6	230	473767.6	4505727.52	352	475046.43	4504781.51
109	472912	4502817.12	231	473778.85	4505725.11	353	475043.46	4504772.25
110	472897.28	4502827.12	232	473785.18	4505726.87	354	475078.51	4504702.46
111	472890.84	4502834.66	233	473794.24	4505730.79	355	475144.66	4504546.03
112	472879.88	4502849.78	234	473801.16	4505737.43	356	475150.81	4504529.29
113	472867.68	4502861.07	235	473805.1	4505744.46	357	475274.37	4504423.2
114	472854.91	4502867.9	236	473807.25	4505760.37	358	475298.42	4504319.14
115	472840.23	4502874.09	237	473806.02	4505793.6	359	475343.03	4504258.65
116	472824.25	4502884.06	238	473803.06	4505830.83	360	475400.5	4504218.96
117	472820.29	4502896.72	239	473797.52	4505870.57	361	475405.58	4504193.56
118	472803.07	4502926.32	240	473794.16	4505887.47	362	475387.32	4504178.8
119	472783.45	4502978.07	241	473793.04	4505894.82	363	475392.36	4504173.31
120	472795.75	4503020.14	242	473795.28	4505900.47	364	475435.62	4504124.1
121	472813.21	4503073.72	243	473800.54	4505903.21	365	475413.4	4504075.29
122	472830.67	4503142.37	244	473809.85	4505903.95	366	475370.54	4504056.24

ZONA ME PËRPARËSI ZHVILLIMIN E EKONOMISË MALORE
ZONA 5, NJËSIA ADMINISTRATIVE RUZHDIË, BASHKIA PATOS, QARKU FIER



PATOS

Njësi Administrative	Zona	Sipërfaqe (Ha)
Patos	Zona 1	413
Ruzhdië	Zona 2	519
Ruzhdië	Zona 3	506
Ruzhdië	Zona 4	619
Ruzhdië	Zona 5	751

1:17,000

Legjendë

- Zona me përparësi zhvillimin e ekonomisë malore
- Ndërtësia
- Bashkia Patos
- Izolpse

Kategorië e Rujtill Rrugor
 Kategorija F. Rruge Lokale

*Zona 5 ndodhet në territorin e Njësisë Administrative Ruzhdië me sipërfaqe prej 751 ha.

**Sistemi Koordinativ: KRGJSH (Korniza Referuese Gjeodetike Shqiptare) EPSG:6870

Zona 5								
Njësia Administrative Ruzhdie								
Nr	Koordinata X	Koordinata Y	Nr	Koordinata X	Koordinata Y	Nr	Koordinata X	Koordinata Y
1	474970.86	4506092.41	158	477278.07	4506017.16	315	477087.5	4503190.09
2	474962.08	4506116.19	159	477294.4	4506004.96	316	477089.25	4503195.97
3	474965.88	4506139.22	160	477316.68	4505987.43	317	477068.93	4503226.61
4	474986.5	4506134.63	161	477331.88	4505977.52	318	477026.86	4503259.47
5	475007.88	4506130.55	162	477345.09	4505967.96	319	477032.41	4503289.31
6	475016.41	4506117.57	163	477357.04	4505958.99	320	477032.89	4503311.54
7	475024.05	4506104.96	164	477366.86	4505952.75	321	477027.97	4503380.12
8	475033.15	4506097.44	165	477382.14	4505949.53	322	477030.03	4503389.8
9	475045.91	4506092.63	166	477392.27	4505952.4	323	477007.65	4503379.8
10	475064.48	4506089.29	167	477406.59	4505959.13	324	477009.39	4503393.61
11	475066.65	4506088.42	168	477425.53	4505969.29	325	477036.38	4503437.9
12	475072.88	4506099.04	169	477437.3	4505977.05	326	477053.84	4503476.32
13	475078.09	4506109.89	170	477449.49	4505984.81	327	477065.75	4503539.03
14	475078.18	4506124.11	171	477456.63	4505989.98	328	477011.93	4503553.47
15	475090.53	4506143.94	172	477470.51	4505998.18	329	477014.95	4503488.7
16	475093.8	4506157.69	173	477488.39	4506008.76	330	476787.78	4503424.03
17	475096.88	4506166.49	174	477503.73	4506019.1	331	476583.39	4503531.57
18	475099.84	4506173.76	175	477512.76	4506025.76	332	476559.58	4503540.69
19	475101.02	4506182.15	176	477522.2	4506033.49	333	476516.32	4503621.26
20	475122.68	4506169.62	177	477534.19	4506040.62	334	476431.38	4503677.22
21	475134.16	4506165.31	178	477539.89	4506041.74	335	476410.75	4503698.65
22	475155.84	4506157.3	179	477548.18	4506038.87	336	476331.37	4503720.88
23	475176.86	4506151.82	180	477556.08	4506032.82	337	476284.94	4503667.3
24	475194.03	4506148.85	181	477562.5	4506027.18	338	476231.76	4503671.27
25	475212.42	4506151.59	182	477571.89	4506020.72	339	476222.63	4503697.46
26	475221.2	4506161.22	183	477578.06	4506018.46	340	476221.83	4503728.02
27	475228.05	4506172.73	184	477589.71	4506017.75	341	476142.46	4503762.15
28	475233.62	4506185.49	185	477600.1	4506016.8	342	476083.32	4503784.38
29	475253.74	4506202.86	186	477611.57	4506013.55	343	476035.3	4503796.68
30	475264.43	4506211.87	187	477619.44	4506010.46	344	475792.81	4503997.1
31	475270.21	4506206.22	188	477629.63	4506008.04	345	475614.22	4504207.45
32	475266.56	4506192.21	189	477641.48	4506008.59	346	475590.01	4504131.64
33	475271.1	4506184.01	190	477652.89	4506010.84	347	475518.57	4504083.22
34	475293.3	4506186.17	191	477661.54	4506013.48	348	475481.66	4504114.58
35	475314.1	4506199.74	192	477668.49	4506016.31	349	475457.85	4504189.19
36	475327.91	4506213.23	193	477674.39	4506019.13	350	475392.36	4504173.31
37	475345.51	4506229.3	194	477677.07	4506018.42	351	475387.32	4504178.8
38	475363.05	4506249.82	195	477679.37	4506014.21	352	475405.58	4504193.56
39	475396.78	4506298.46	196	477680.89	4506008.14	353	475400.5	4504218.96
40	475416.12	4506329.16	197	477681.59	4506004.84	354	475343.03	4504258.65
41	475428.01	4506343.9	198	477681.65	4505999.42	355	475298.42	4504319.14
42	475436.77	4506355.43	199	477681.43	4505995.84	356	475274.37	4504423.2
43	475459.4	4506375.37	200	477680.27	4505993.31	357	475150.81	4504529.29
44	475471.33	4506387.57	201	477677.53	4505989.97	358	475144.66	4504546.03
45	475480.29	4506381.32	202	477674.03	4505983.45	359	475078.51	4504702.46
46	475486.75	4506371.87	203	477672.36	4505978.67	360	475043.46	4504772.25
47	475497.65	4506362.47	204	477673.22	4505973.12	361	475046.43	4504781.51
48	475500.32	4506350.44	205	477674.99	4505968.64	362	475020.64	4504795.07
49	475515.66	4506341.72	206	477679.15	4505963.79	363	474991.86	4504817.23
50	475541.02	4506345.18	207	477686.6	4505960.17	364	474961.77	4504856.58
51	475551.65	4506359.91	208	477704.96	4505951.64	365	474923.4	4504868.82
52	475563.54	4506375.28	209	477728.79	4505939.08	366	474904.22	4504884.04

53	475572.98	4506382.37	210	477740.41	4505929.82	367	474882.39	4504919.75
54	475582.47	4506385.66	211	477748.7	4505922.23	368	474873.13	4504970.03
55	475664.52	4506347.14	212	477755.28	4505913.84	369	474856.93	4504993.84
56	475691.32	4506335.17	213	477766.06	4505897.16	370	474785.16	4505069.91
57	475712.17	4506326.09	214	477771.86	4505887.43	371	474770.94	4505108.27
58	475729.14	4506322.05	215	477779.65	4505876.8	372	474742.49	4505145.64
59	475744.43	4506317.57	216	477790.07	4505868.45	373	474722.98	4505199.88
60	475757.19	4506312.21	217	477765.59	4505856.25	374	474708.1	4505259.08
61	475769.15	4506303.04	218	477714.95	4505839.58	375	474683.29	4505297.12
62	475777.26	4506297.2	219	477657.23	4505825.99	376	474679.99	4505324.9
63	475790.43	4506292.7	220	477602.08	4505815.93	377	474691.56	4505382.45
64	475801.04	4506290.28	221	477691.36	4505742.04	378	474690.24	4505427.76
65	475814.61	4506288.32	222	477673.21	4505624.51	379	474682.3	4505428.09
66	475833.3	4506283.03	223	477670.96	4505592.76	380	474567.28	4505700.22
67	475853.53	4506290.45	224	477637.88	4505596.07	381	474541.69	4505695.39
68	475872.85	4506303.79	225	477621.35	4505573.25	382	474494.72	4505745.33
69	475885.82	4506317.06	226	477613.74	4505547.45	383	474459.99	4505867.37
70	475900.51	4506328.66	227	477644.09	4505488.66	384	474459.33	4505885.23
71	475919.03	4506337.76	228	477661.39	4505456.59	385	474456.12	4505917.45
72	475938.84	4506345.18	229	477669.01	4505422.14	386	474469.79	4505906.81
73	475955.74	4506347.91	230	477651.55	4505408.81	387	474480.28	4505896.97
74	475986.28	4506342.34	231	477640.57	4505339.5	388	474490.11	4505889.46
75	476012.12	4506340.51	232	477627.9	4505251.7	389	474504.75	4505886.67
76	476058.69	4506339.77	233	477619.19	4505242.24	390	474513.64	4505886.98
77	476092.15	4506338.46	234	477621.94	4505233.98	391	474521.63	4505891.3
78	476110.39	4506334.86	235	477579.61	4505184.77	392	474526.18	4505901.52
79	476132.04	4506329.6	236	477453.45	4505203.51	393	474529.81	4505917.44
80	476144.36	4506325.51	237	477374.08	4505254.31	394	474533.54	4505943.1
81	476163.94	4506316	238	477305.42	4505255.11	395	474539.45	4505963.07
82	476180.56	4506306.87	239	477247.47	4505234.87	396	474548.14	4505980.75
83	476202.72	4506293.58	240	477187.54	4505209.07	397	474557.24	4506000.12
84	476231.22	4506281.63	241	477296.75	4505095.5	398	474570.36	4506018.9
85	476244.82	4506276.28	242	477335.38	4505046.29	399	474582.09	4506030.47
86	476266.38	4506279.07	243	477471.91	4504936.75	400	474594.46	4506040.77
87	476290.8	4506290.77	244	477596.79	4504743.07	401	474601.83	4506044.46
88	476311.77	4506307.94	245	477661.35	4504593.32	402	474609.04	4506043.9
89	476332.37	4506320.45	246	477681.24	4504554.91	403	474613.52	4506040.78
90	476348	4506323.17	247	477698.34	4504518.81	404	474618.93	4506030.68
91	476381.05	4506319.74	248	477713.32	4504474.32	405	474621.88	4506013.13
92	476425.64	4506307.55	249	477730.95	4504441.14	406	474623.52	4505999.81
93	476440.84	4506311.11	250	477755.08	4504413.2	407	474628.97	4505967.27
94	476473.58	4506316.63	251	477776.03	4504383.51	408	474632.98	4505949.32
95	476487.48	4506322.29	252	477802.38	4504356.84	409	474638.63	4505936.47
96	476490.35	4506331.21	253	477813.5	4504362.72	410	474644.23	4505928.06
97	476487.7	4506340.92	254	477833.5	4504336.52	411	474653.2	4505922.02
98	476487.16	4506351.07	255	477871.89	4504326.24	412	474661.06	4505919.36
99	476490.5	4506354.5	256	477904.1	4504286.22	413	474670.97	4505923.28
100	476511.15	4506363.2	257	477933.87	4504249.18	414	474676.15	4505933.08
101	476520.37	4506371.34	258	477966.68	4504165.38	415	474682.3	4505951.15
102	476530.08	4506373.15	259	478099.23	4503977.98	416	474688.72	4505963.71
103	476544.09	4506369.92	260	478103.57	4503977.88	417	474695.39	4505973.11
104	476552.65	4506361.55	261	478104.31	4503965.39	418	474713.19	4505990.46
105	476556.96	4506354.4	262	478114.47	4503949.09	419	474727.04	4506000.78
106	476570.61	4506345.67	263	478123.26	4503935.12	420	474738.4	4506007.26
107	476584.62	4506341.6	264	478128.66	4503912.47	421	474745.99	4506010.1

108	476602.43	4506339.26	265	478141.46	4503898.19	422	474751.5	4506010.16
109	476618.52	4506339.02	266	478143.79	4503884.22	423	474756.17	4506009.16
110	476635.44	4506340.06	267	478143.79	4503879.66	424	474763.23	4506002.67
111	476663.75	4506344.61	268	478147.28	4503870.99	425	474766.28	4505995.3
112	476681.08	4506346.93	269	478158.5	4503866.12	426	474766.79	4505987.47
113	476700.16	4506344.18	270	478158.29	4503859.77	427	474767.92	4505980.71
114	476712.02	4506343.47	271	478140.4	4503856.06	428	474770.04	4505962.1
115	476721.73	4506345.7	272	478125.37	4503858.6	429	474772.87	4505955.78
116	476735.29	4506344.16	273	478112.67	4503857.76	430	474776.51	4505952.22
117	476752.29	4506338	274	478105.69	4503855.01	431	474786.87	4505953.19
118	476757.87	4506331.72	275	478104.21	4503848.13	432	474793.56	4505960.88
119	476769.75	4506329.31	276	478100.08	4503845.9	433	474805.98	4505985.59
120	476790.95	4506325.74	277	478083.46	4503845.48	434	474815.15	4505998.4
121	476807.1	4506320	278	478082.3	4503814.58	435	474815.48	4505998.7
122	476827.54	4506309.23	279	478055.45	4503748.92	436	474826.26	4506008.69
123	476848.41	4506298.04	280	478032.96	4503702.09	437	474834.67	4506014.07
124	476865.95	4506281.73	281	477980.57	4503641.76	438	474842.47	4506016.28
125	476883.86	4506270.5	282	477955.7	4503606.31	439	474849.03	4506016.57
126	476892.02	4506260.01	283	477918.66	4503562.65	440	474852.24	4506014.06
127	476898.83	4506257.13	284	477902.78	4503538.05	441	474853.35	4506009.42
128	476913.42	4506239.51	285	477881.61	4503498.1	442	474852.77	4506004.33
129	476926.29	4506224.42	286	477805.48	4503403.71	443	474850.71	4505999.44
130	476941.22	4506214.01	287	477732.24	4503280.5	444	474845.94	4505990.7
131	476958.7	4506203.63	288	477676.68	4503163.03	445	474841.82	4505980.49
132	476980.72	4506203.03	289	477642.55	4503095.95	446	474839.79	4505973.48
133	476997.65	4506203.22	290	477648.5	4502974.11	447	474838.88	4505959.71
134	477006.97	4506202.48	291	477583.81	4502839.97	448	474840.2	4505955.49
135	477025.71	4506200.09	292	477556.43	4502744.32	449	474844.09	4505948.97
136	477030.47	4506200.3	293	477555.63	4502707.41	450	474852.89	4505938.06
137	477039.53	4506199.45	294	477511.98	4502577.63	451	474859.72	4505933.26
138	477049.57	4506196.39	295	477468.88	4502447.86	452	474868.85	4505931.04
139	477066.18	4506188.64	296	477406.57	4502373.24	453	474877.1	4505932.19
140	477083.12	4506179.15	297	477381.44	4502338.36	454	474889.74	4505938.22
141	477100.38	4506169.81	298	477372.88	4502351.31	455	474891	4505975.22
142	477123.67	4506159.92	299	477373.14	4502382	456	474892.03	4505989.16
143	477139.94	4506153.75	300	477365.21	4502433.33	457	474893.13	4506026.26
144	477154.16	4506146.29	301	477398.81	4502582.56	458	474900.34	4506028.75
145	477168.42	4506135.49	302	477306.21	4502708.76	459	474910.64	4506027.85
146	477183.48	4506123.91	303	477151.16	4502868.31	460	474919.91	4506027.58
147	477191.66	4506116.23	304	477113.59	4502932.6	461	474929.04	4506028.32
148	477199.22	4506107.74	305	477054.06	4502934.19	462	474941.7	4506032.14
149	477204.55	4506099.86	306	477017.81	4502951.92	463	474950.82	4506033.9
150	477213.26	4506088.52	307	476918.06	4503121.25	464	474962.76	4506034.29
151	477238.84	4506072.77	308	476938.43	4503128.92	465	474973.42	4506034.41
152	477251.01	4506064.18	309	476941.87	4503116.49	466	474988.04	4506033.56
153	477257.43	4506058.53	310	477001.14	4503084.74	467	474995.39	4506034.4
154	477261.94	4506052.71	311	477034.21	4503086.59	468	474993.73	4506046.83
155	477264.74	4506044.17	312	477041.62	4503099.55	469	474970.86	4506092.41
156	477264.88	4506031.62	313	477046.91	4503128.39			
157	477268.62	4506024.36	314	477045.33	4503155.38			